



WHERE YOU WANT TO BE



Independent living with peace of mind for the future



INTRODUCING...

THE VILLAS AND COTTAGES OF THE HILL AT WHITEMARSH

PERFECTLY POSITIONED IN A SPECTACULAR SECLUDED SETTING, THE HILL AT WHITEMARSH, A NOT-FOR-PROFIT CORPORATION, IS THE DELAWARE VALLEY'S NEWEST CONTINUING CARE RETIREMENT COMMUNITY. OVERLOOKING HISTORIC ERDENHEIM FARM, AND ONLY MOMENTS FROM CHESTNUT HILL, THE MAIN LINE, HUNTINGDON VALLEY, ELKINS PARK, ABINGTON AND CENTER CITY PHILADELPHIA, THE HILL OFFERS BEAUTIFULLY APPOINTED, MAINTENANCE-FREE VILLAS AND COTTAGES, SCENIC VISTAS, EXCELLENT SERVICES AND AMENITIES, FINE DINING, AND AN INVIGORATING LIFE STYLE. A STATE-OF-THE-ART, FULLY STAFFED WELLNESS CENTER OFFERS A VARIETY OF SERVICES, INCLUDING MASSAGE, PODIATRY, AND ON-SITE LABORATORY. IN ADDITION, THE HILL'S LIFE CARE CONTRACT ASSURES YOU OF A COMPLETE CONTINUUM OF CARE—INCLUDING ASSISTED LIVING AND SKILLED NURSING—IN THE ON-SITE MEDICARE CERTIFIED, STATE-OF-THE-ART HEALTH CENTER.

VILLAS & COTTAGES

Add a New Dimension to Your Life!

The villas and cottages at The Hill at Whitemarsh have been thoughtfully designed to complement your lifestyle. All residences feature open floor plans, 2-3 bedrooms plus den, spacious closets, patios and/or decks and attached garages. Sizes range from 2,000 - 2,440 square feet. Finished walkout basements are available on select models.

From well-appointed gourmet kitchens to expansive views that allow for an abundance of natural light, the Villas and Cottages of The Hill at Whitemarsh are the perfect choice for those (62+) seeking elegant surroundings, outstanding services, social activity, and peace of mind for the future.





THE WHITEMARSH

3 Bedroom, Den, 3 Bath Villa

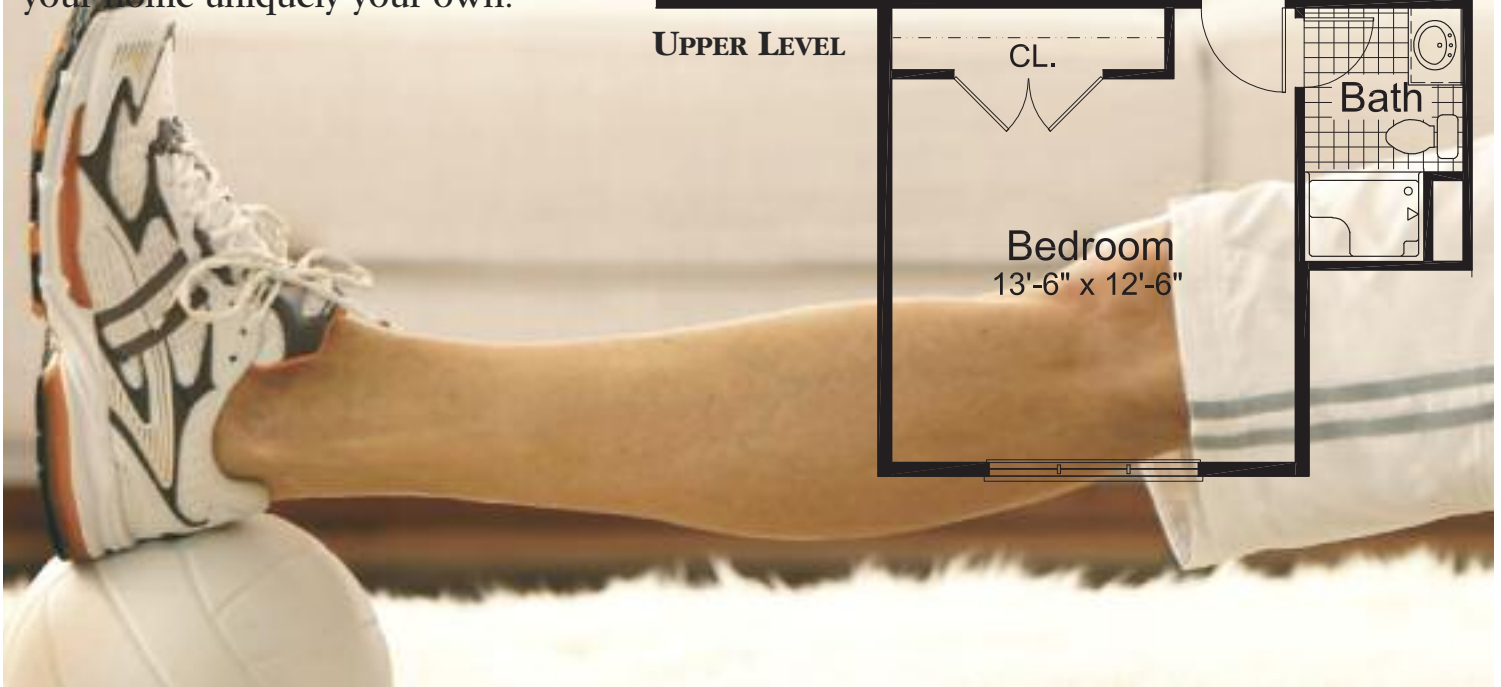
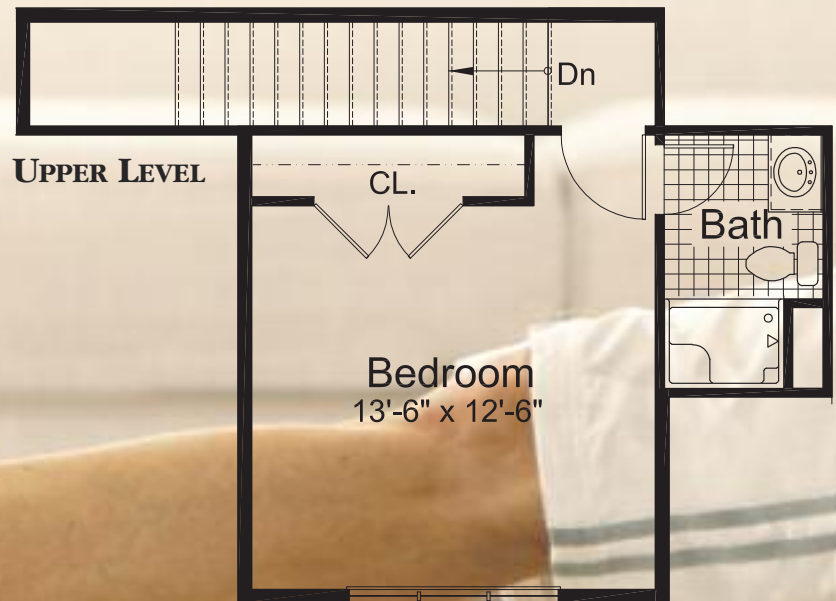
Main Level 2,165 sq. ft.

Upper Level 295 sq. ft.

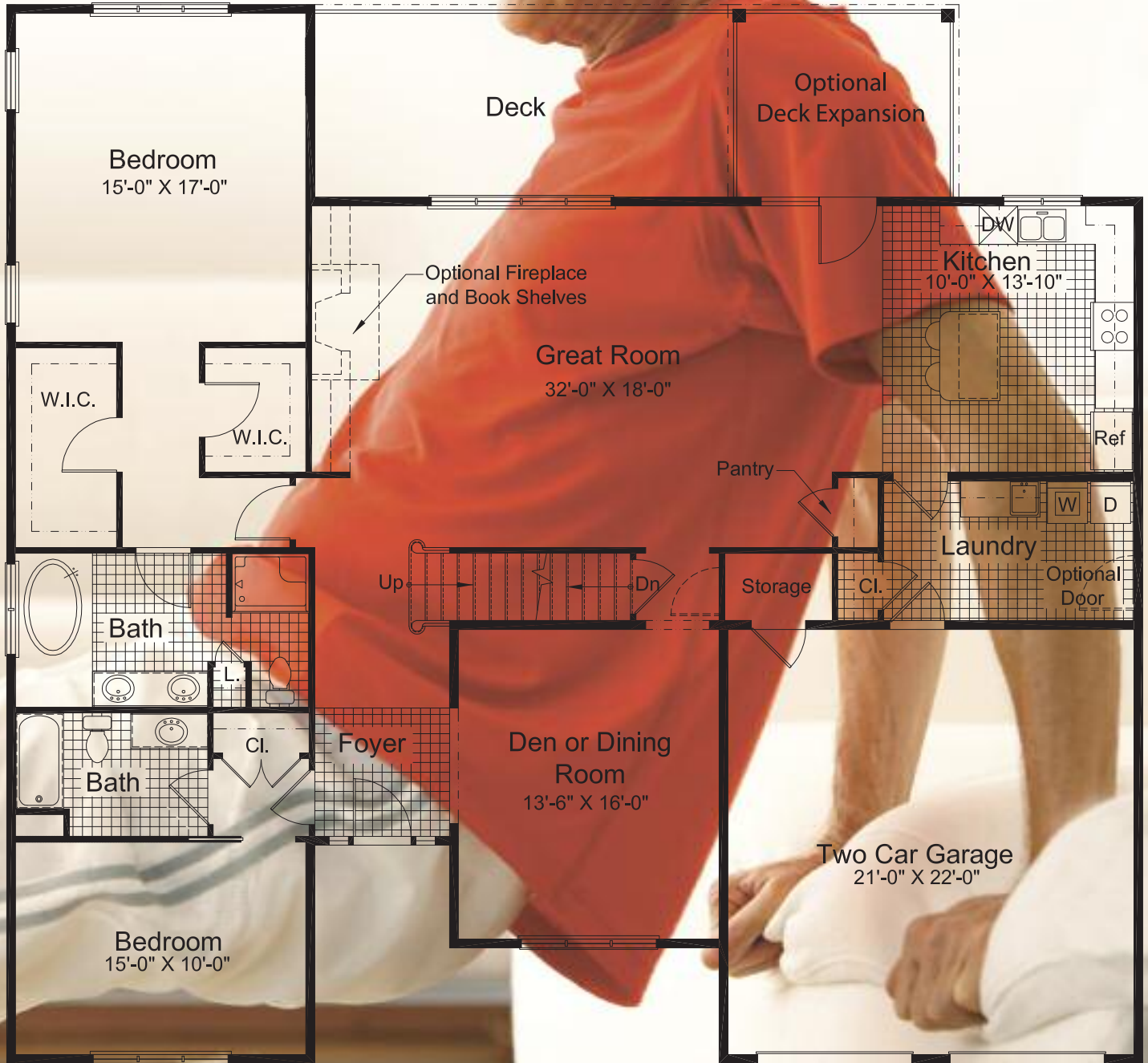
Optional Finished Lower Level 2,136 sq. ft.



Because preferences vary, you will be offered customization options to make your home uniquely your own.



MAIN LEVEL



Other villa floorplans and options are available.
Architect's rendering, subject to change.

THE CHESTNUT HILL

2 Bedroom, Den, 2.5 Bath Cottage

Main Level 2,008 sq. ft.

Upper Level 357 sq. ft.

Optional Finished Lower Level 2,013 sq. ft.

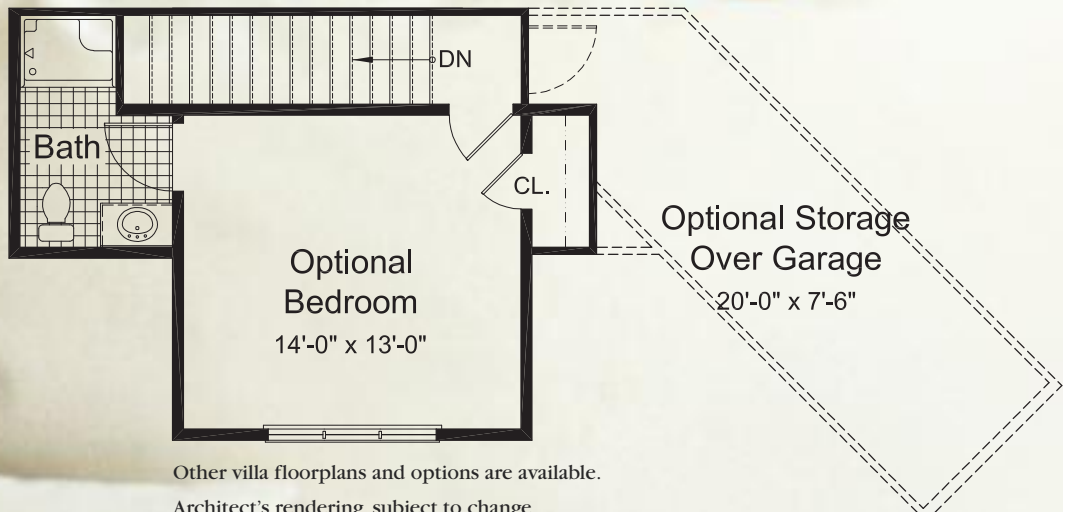


Because preferences vary,
you will be offered
customization options
to make your home
uniquely your own.





UPPER LEVEL



Other villa floorplans and options are available.
Architect's rendering, subject to change.

PRIVACY, INDEPENDENCE, SERVICE, SECURITY AND A SUPERB LIFESTYLE

The Hill at Whitemarsh Villas and Cottages are only steps away from:

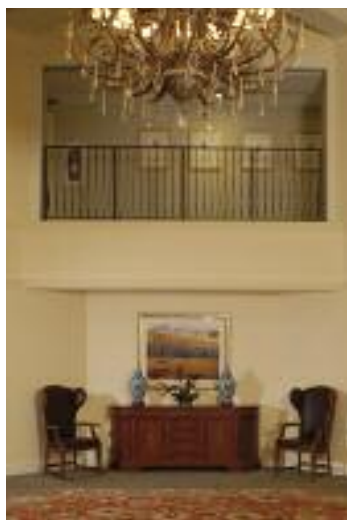
- Fine Gourmet Dining
- A full-service Dining Room, Casual Cafe and Spirited Pub
- All-day breakfast and daily specials in the Café
- Happy Hour specials
- A Private Dining Room, perfect for receptions, meetings, or family gatherings
- The Great Room—featuring a 1911 Steinway, fireplace, and beautiful chandeliers—a popular place for the Bridge Club, parties, dances, and cultural events.
- The Hill at Whitemarsh Theater, featuring popular movies, lectures and presentations
- The Business Center, offering wireless, high-speed internet access along with computers, printers, fax machines and shredders
- The Creative Arts Studio, site of a myriad of resident projects

A CULTURE OF WELLNESS

At The Hill at Whitemarsh, you'll experience a culture of wellness that enriches body, mind and spirit. Favorite places include:

- The Indoor Aquatic Center, featuring a bromide pool for aqua aerobics classes and individual exercise
- The Fitness Center, staffed by a certified Personal Trainer, features computerized fitness equipment, group exercise classes, and walking clubs.

In addition, a full range of activities including excursions, educational opportunities and entertainment are coordinated by The Hill's Resident Services team. Board Certified Physicians are available on-site to serve residents of The Hill at Whitemarsh. And... concierge services, buses and a private car service are available to meet residents' needs!



PERFECT TIME... PERFECT PLACE...PERFECT PLAN!

The Hill at Whitemarsh is dedicated to the conservation of natural resources and the protection and improvement of our environment. Through area partnerships, including Morris Arboretum, Residents enjoy an abundance of environmental enrichment programs.

The Hill at Whitemarsh is governed by a voluntary Board of Directors. Located at Flourtown and Thomas Roads, on 96 acres adjoining Erdenheim Farm, The Hill's first resident was welcomed in March, 2007.





WHERE YOU WANT TO BE

Call today for a personal consultation and a tour.

**4000 FOX HOUND DRIVE
LAFAYETTE HILL, PA 19444
215.402.8500
TOLL-FREE 800-315-4103
FAX 215-402-8501
*www.thehillatwhitemarsh.org***